

GROUP A:
2 x EXISTING TOILETS
2 x TOILETS TO BE REHABILITATED
0 x EXISTING STANDPIPES
0 x STANDPIPES TO BE REHABILITATED



Replace toilet seat and cover set.

GROUP B:
1 x EXISTING TOILETS
1 x TOILETS TO BE REHABILITATED
0 x EXISTING STANDPIPES
0 x STANDPIPES TO BE REHABILITATED



Repair basin plumbing.

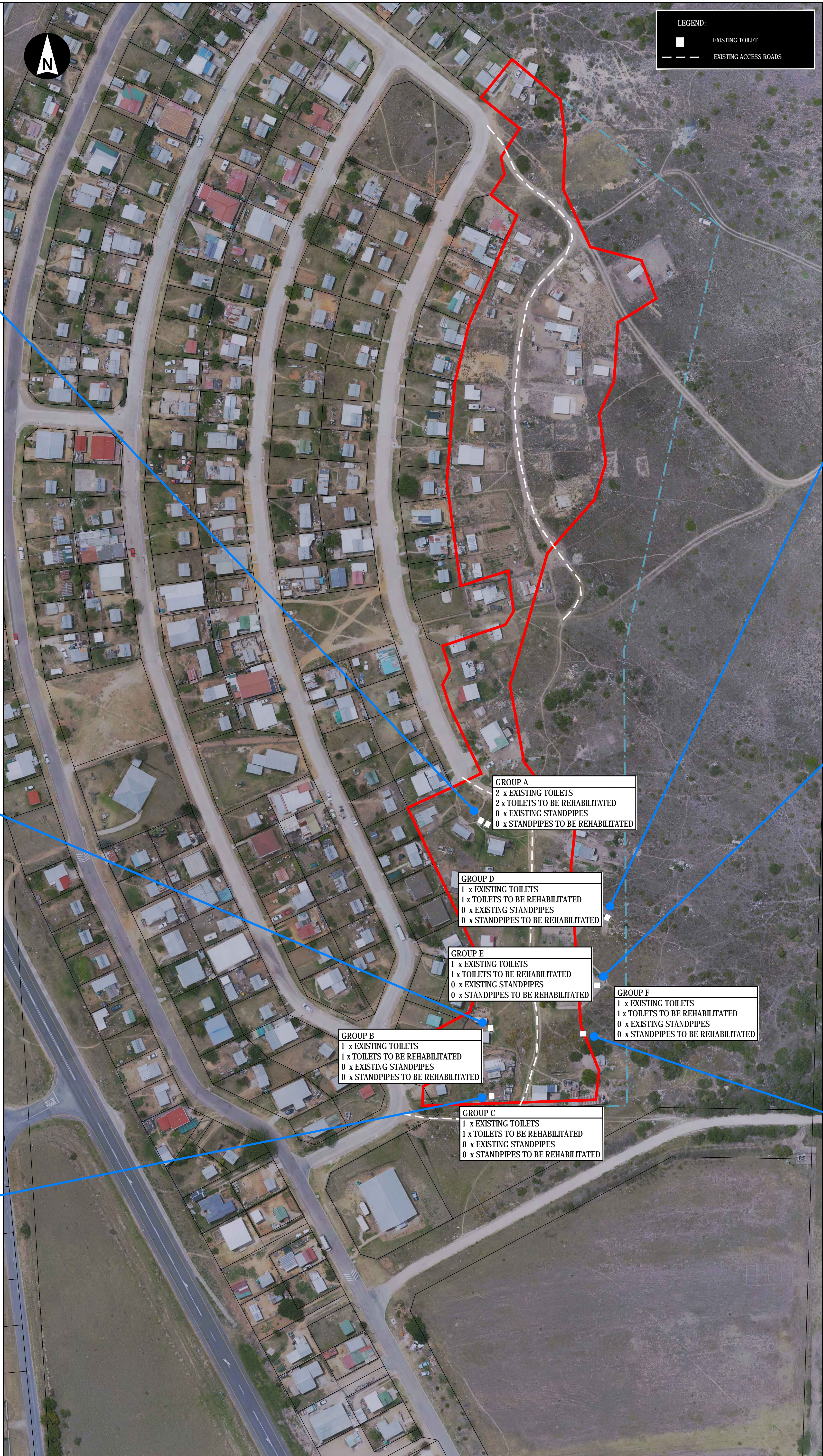
Replace steel door.

Replace cistern and toilet seat and cover set


GROUP C:
1 x EXISTING TOILETS
1 x TOILETS TO BE REHABILITATED
0 x EXISTING STANDPIPES
0 x STANDPIPES TO BE REHABILITATED



Replace with flush toilet.



GROUP D:
1 x EXISTING TOILETS
1 x TOILETS TO BE REHABILITATED
0 x EXISTING STANDPIPES
0 x STANDPIPES TO BE REHABILITATED



Replace with flush toilet.

GROUP E:
1 x EXISTING TOILETS
1 x TOILETS TO BE REHABILITATED
0 x EXISTING STANDPIPES
0 x STANDPIPES TO BE REHABILITATED



Replace with flush toilet.

GROUP F:
1 x EXISTING TOILETS
1 x TOILETS TO BE REHABILITATED
0 x EXISTING STANDPIPES
0 x STANDPIPES TO BE REHABILITATED



Replace with flush toilet.

GENERAL NOTES:
1. Proposed position of 2 new flush toilets.
2. Construct 'gully' complete including 250mm concrete manhole ring, long radius 90° bend and PVC gully and gate.

RESPONSIBLE PERSONS

	SIGNATURE	DATE
DRAWN		
DESIGNED		
CHECKED		

THE MASTER HELD AT THE AURECON GEORGE OFFICE BEARS THE SIGNATURE OF APPROVAL

aurecon
www.aurecongroup.com

CLIENT

MOSSEL BAY MUNICIPALITY

REV	DATE	REVISION DETAILS	APPROVED

PROJECT

MOSSEL BAY ABS

TITLE

REHABILITATION OF INTERM BASIC SERVICES BRANDWACHT

DRAWN	DESIGNED	FOR DISCUSSION PURPOSES ONLY	
A VAN WYK	E WITBOOI	PROJECT No.	
CHECKED		113408	
M BOTHA		SCALE	SIZE
APPROVED		1 : 750	A0
AC KEYSER		DRAWING No.	REV
DATE		113408 GE 519	A